







GRANDIO[®]

G R E E N H O U S E S

2015 WOOD ANCHORING KIT

WOOD ANCHORING KIT PARTS LIST FOR ALL SIZES

GRAPHIC	PART NAME	8X8	8X12	8X16	8X20	8X24
	3/8 X 2 LAG SCREW	12	14	16	18	20
	WASHER	18	21	24	27	30
	3/8" DRILL BIT	1	1	1	1	1
	SEALING TAPE	50'	50'	50'	100'	100'

ADDITIONAL ITEMS NEEDED:

- DRILL
- BUBBLE LEVEL
- TAPE MEASURE
- MARKER OR SOFT PENCIL
- SAFETY GLASSES OR GOGGLES
- VACUUM OR CANNED AIR TO CLEAN OUT HOLES
- 9/16" WRENCH OR SOCKET TO TIGHTEN NUTS

© 2015 Grandio Greenhouses, Backyard Living Source Inc. All rights reserved
2015 Manual Edition Wood Anchoring Kit

GRANDIO WOOD ANCHORING KIT PREPARATION

Before you begin, take time to complete this check list. 

There are a few things every foundation should provide:

- ☐ **1.** Your foundation must be anchored to the ground (Wind gusts can move or turn over a greenhouse because of its low weight to surface area ratio). Before you start any foundation, you should know the greenhouse's outside base dimensions. The dimensions are listed in the Grandio Manual for each size base kit. Be sure to prepare and level your surface prior to installation.
- ☐ **2.** There must be a way for water to drain out of the greenhouse (If water doesn't drain, it will collect on the floor and become stagnant promoting algae, disease, insect growth, and may create a walking hazard in freezing temperatures).
- ☐ **3.** Measures should be taken to prevent weeds and grass from growing in the greenhouse floor (Greenhouses will provide optimum conditions for weeds to grow along with other the plants you have. Weeds can harbor harmful insects and diseases and should be kept out of the greenhouse).
- ☐ **4.** Insure that your wooden surface is anchored properly, the wood anchors provided are only as secure as the foundation they attach to.
- ☐ **5.** Assemble your Grandio Base Kit according to the instructions in your greenhouse manual.
- ☐ **6.** Carefully apply the foam tape sticky side to the center of the bottom side of your base kit. Cut the tape to leave the holes for the anchors open for the bolt entry. This will create a seal for the base kit to the wood surface helping to block drafts.
- ☐ **7.** Lay your base kit into place, align the base with the wood surface, then measure the base kit from corner to corner for square, use a bubble level to check for any allowances needed, use the provided washers to shim if needed. Once you have aligned and squared your base, mark the surface through all holes with a marker to know where to drill holes into the wood. Move the base kit and washers out of your way to allow for room to drill your holes into the wood surface. Keep the washers and base aligned with the hole they will go back onto for quicker installation.

Follow the steps for installing your anchor screws on the next page.

GRANDIO WOOD ANCHORING KIT INSTALLATION

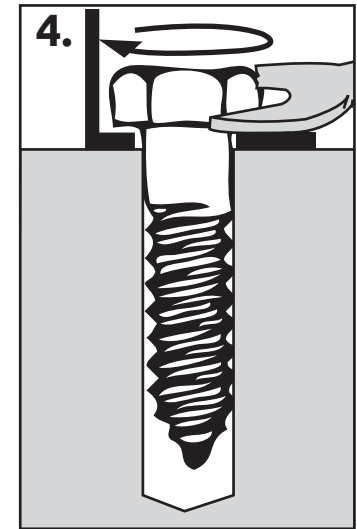
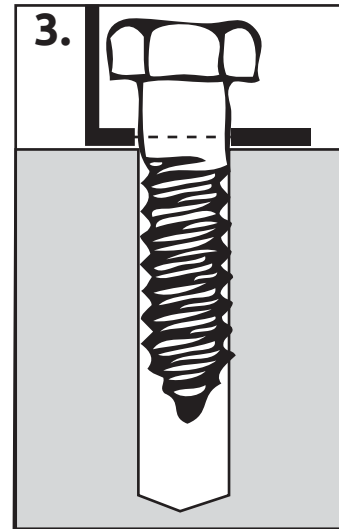
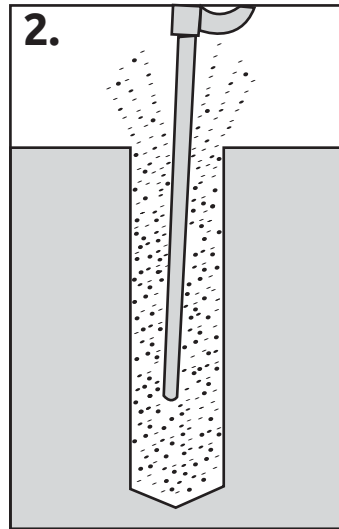
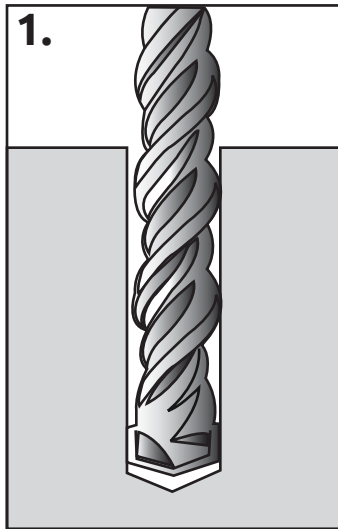
1. Drill holes into the base material using a drill and the carbide tipped drill bit that matches the correct diameter needed for the anchor being installed. We have supplied the 3/8" drill bit for you to use which fits the lag screws provided.

CAUTION: Wear protective eye wear when drilling.

2. Clean out all debris from the holes before inserting the screws, we recommend a vacuum or canned air and a pipe brush.

3. Move the base back over so the holes align for the screw entry. Use your bubble level to square and level the base and the provided washers to help shim under the base to level if needed. Insert the screw through the base kit into the hole in the base material hand turn the screw a few turns.

4. Use a wrench to turn the screw by turning the head a few times, do not tighten fully, allow some play. Once all screws are installed check and measure for square and level. If everything is correct tighten the screw to a snug fit, do not over tighten the screws as this may strip the threads.





GRANDIO®
G R E E N H O U S E S

2015 Model Grandio Wood Anchor Kit

**INSTALLATION MANUAL
KEEP IN A SAFE PLACE FOR REFERENCE**

CONTACT US IF YOU NEED HELP
OR
HAVE MISSING OR DAMAGED PARTS

GRANDIOGREENHOUSES.COM

**BACKYARD LIVING SOURCE, INC.
9543 W. EMERALD ST., SUITE 101
BOISE, ID 83704
1-866-448-8231**